

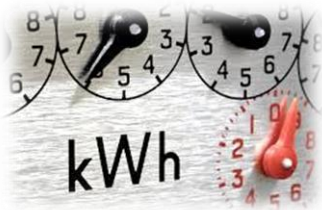
# Tackle your Utility Costs one step at a time



**Environmental Monitoring  
Repair and Installation**



**Generation Monitoring  
Repairs and Installation**



**Electricity Monitoring  
Repairs and Installation**



**Water Monitoring  
Repairs and Installation**

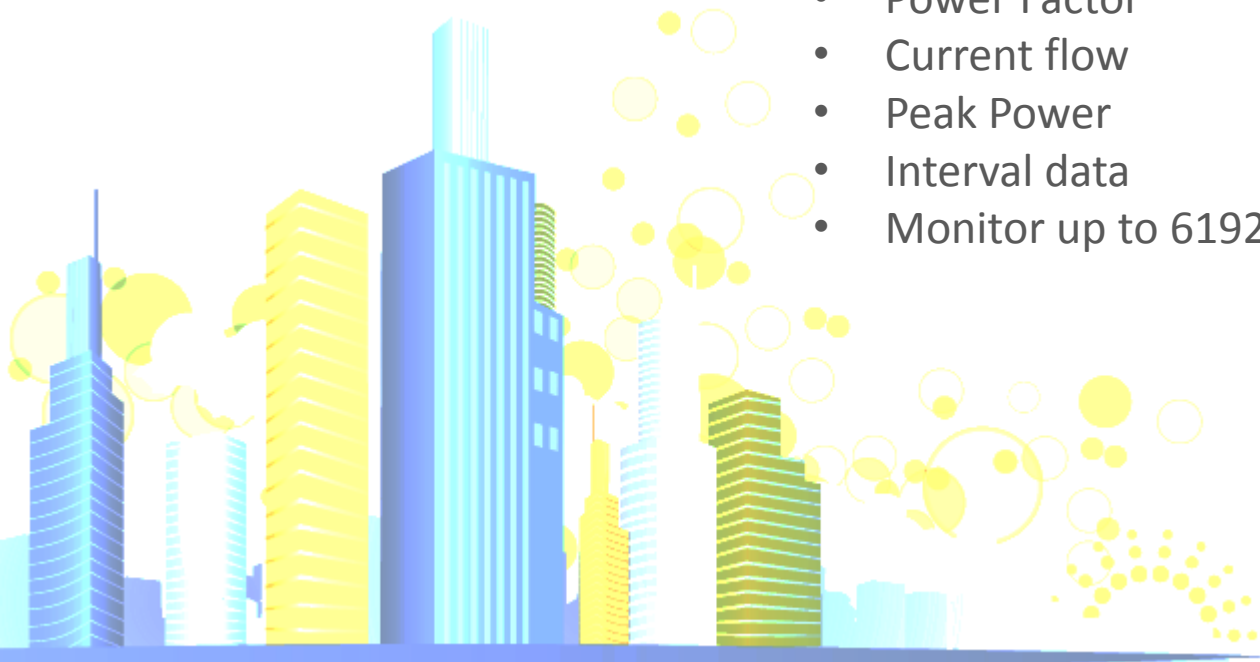


**Gas Monitoring  
Repairs and Installation**

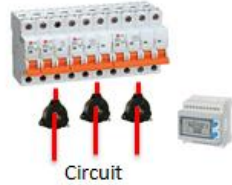
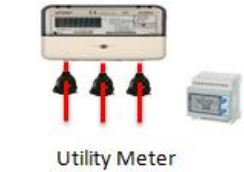


## Electricity

- Class 1 Monitoring
- Amps, volts, Power,
- Power Factor
- Current flow
- Peak Power
- Interval data
- Monitor up to 6192 circuits or sub boards



## Electricity monitoring



## Monitoring Capability Examples V1



Web Portal



## Water

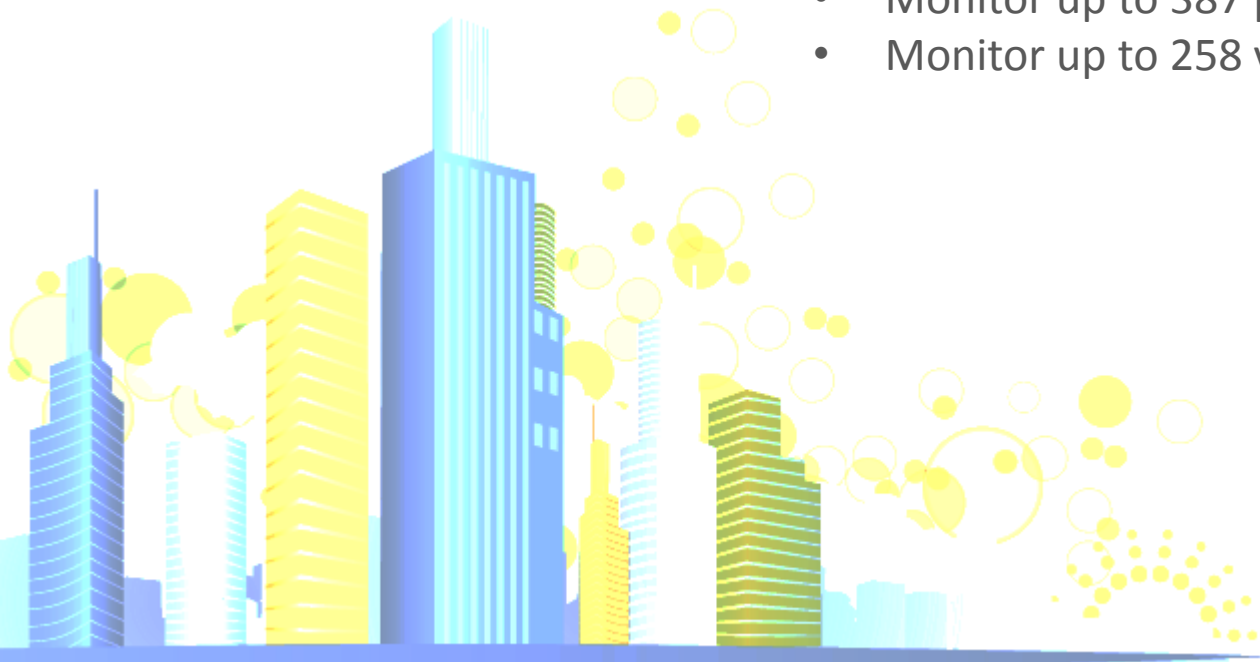
- Water flow
- Water Consumption,
- Water storage levels
- Monitor up to 387 pulse inputs
- Monitor up to 258 via RS485





## GAS

- Gas flow
- Gas Consumption,
- Monitor up to 387 pulse inputs
- Monitor up to 258 via RS485



## Gas and Water Monitoring



Utility Water Meter



Water Pump



Water Level



Utility Gas Meter



20kms



4kms



20kms



Next G



Router



PC or Server



SD Card



[www.allsolus.com.au](http://www.allsolus.com.au)

Web Portal

## Monitoring Capability Examples V1



## Renewables

- Solar PV
- Wind,
- Hyrdo
- Cogen
- Monitor up to 6192 power generation points



## Renewables monitoring



Grid Connect PV



Battery Storage



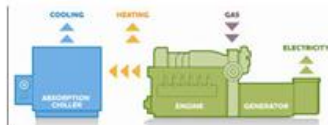
Wind Generation



Solar hot Water



Hydro



Cogeneration



20kms



Next G



Router



PC or Server



SD Card



[www.allsolus.com.au](http://www.allsolus.com.au)

Web Portal

## Monitoring Capability Examples V1



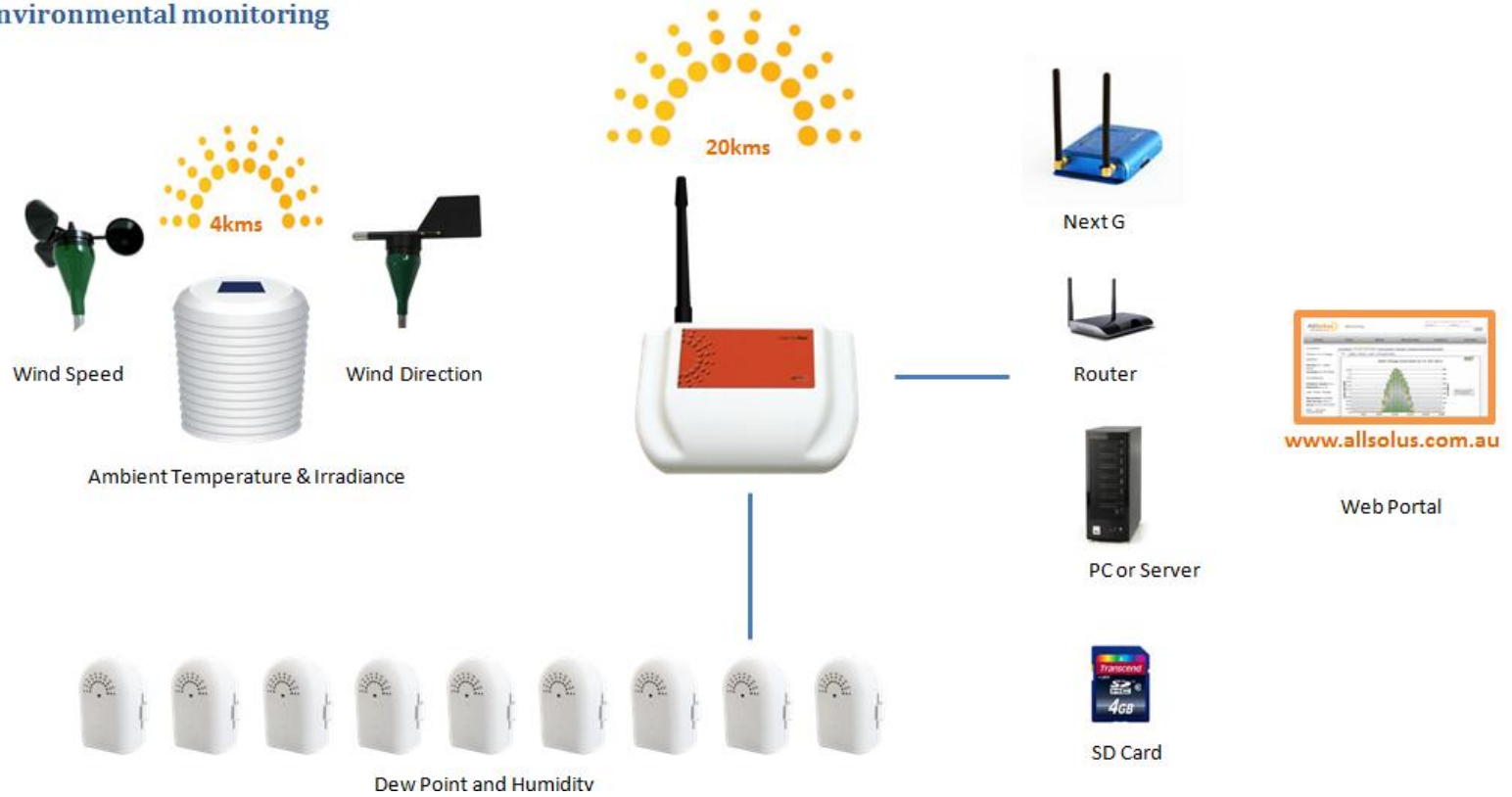


## Environmental conditions

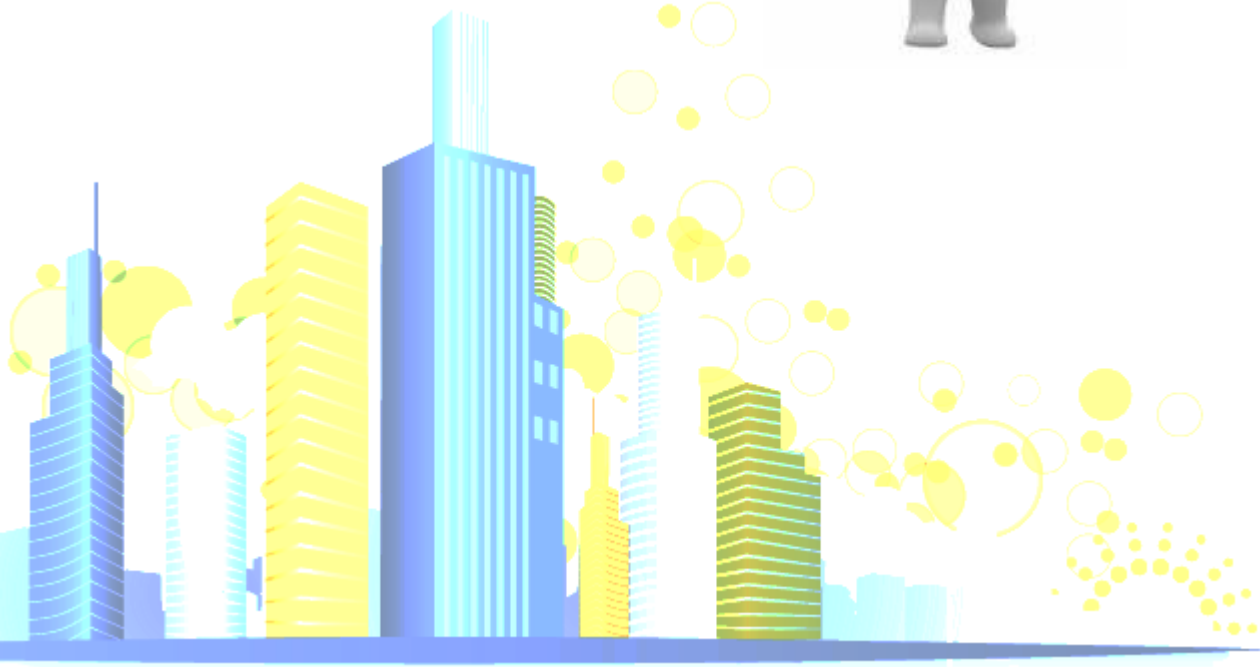
- Wind Speed and Direction
- Ambient air Temperature
- Dew point
- Surface and cell temperature
- Irradiance



### Environmental monitoring



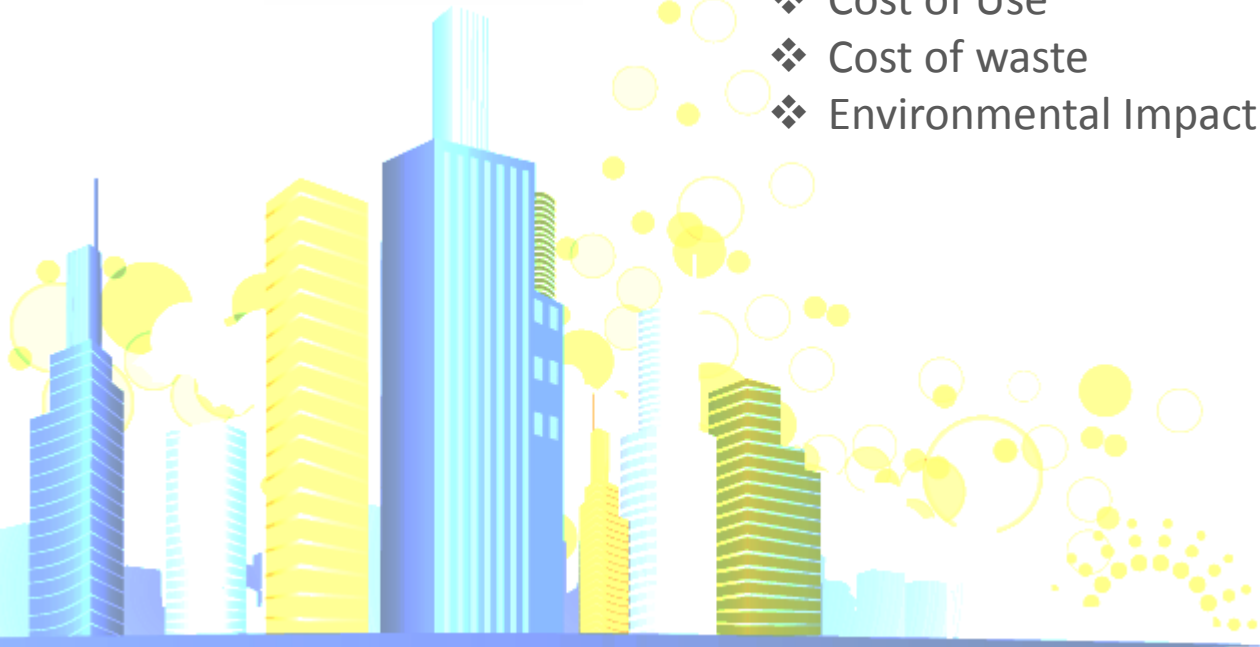
# Why Monitor





## Monitor

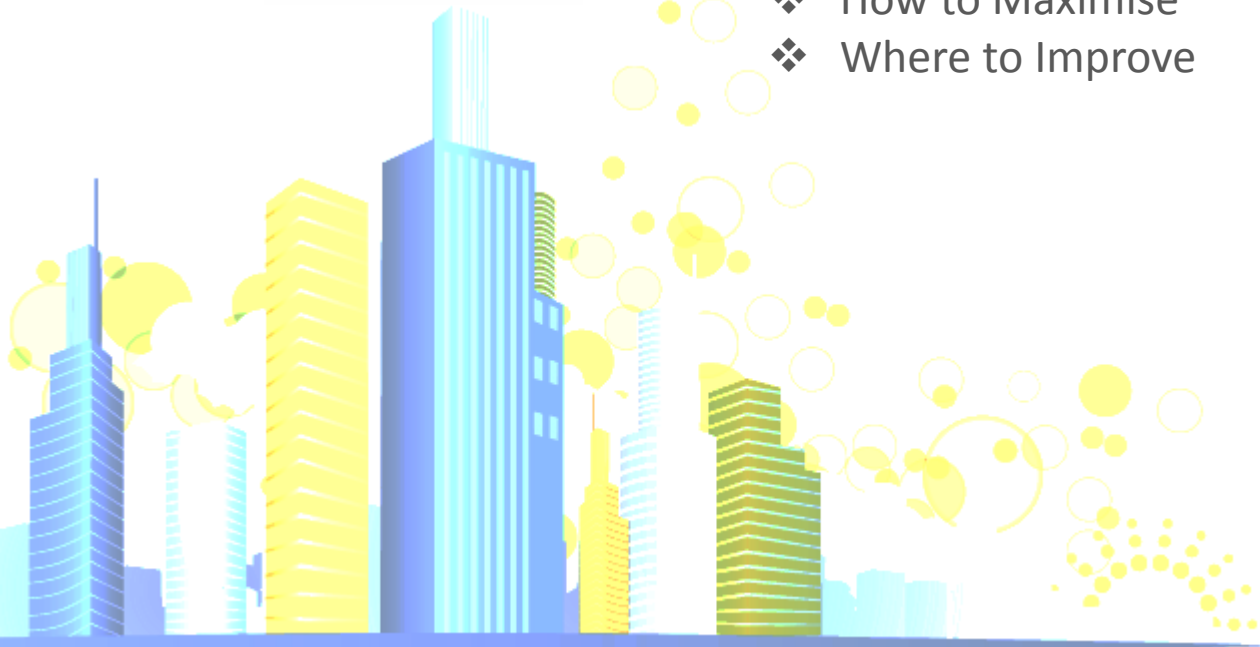
- ❖ How Much Use
- ❖ How You Use
- ❖ Where You Use
- ❖ Cost of Use
- ❖ Cost of waste
- ❖ Environmental Impact





## Learn

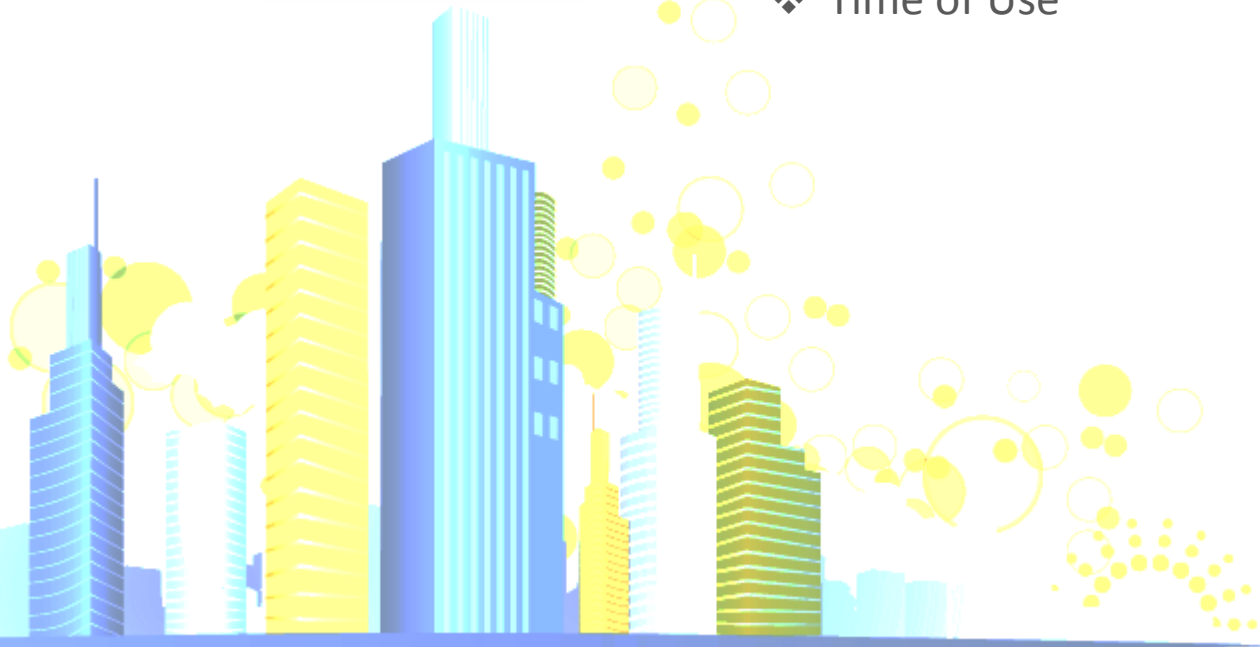
- ❖ Why You Use
- ❖ How to Reduce
- ❖ Where to Save
- ❖ How to Maximise
- ❖ Where to Improve





## Control

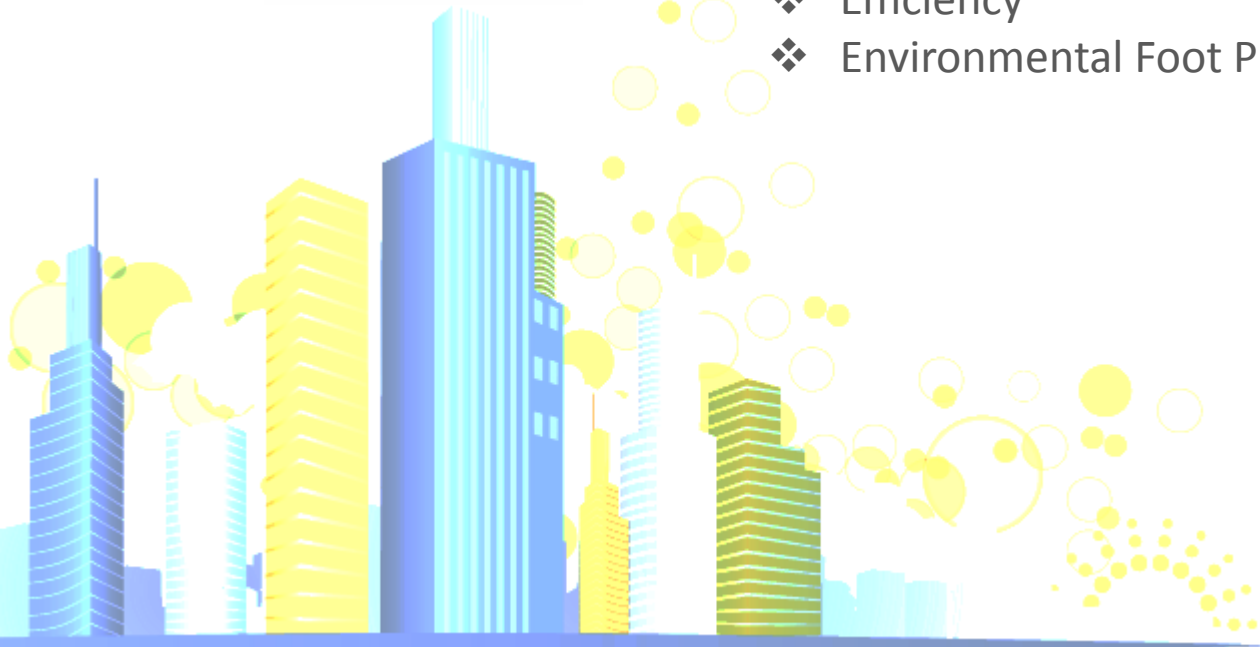
- ❖ Utility Costs
- ❖ Usage
- ❖ Waste
- ❖ Time of Use





## Improve

- ❖ Utility Costs
- ❖ Renewable Generation ROI
- ❖ Education
- ❖ Efficiency
- ❖ Environmental Foot Print





**Reduce Demand Charges**

**Reduce Consumption**

**Reduce Costs**

**Reduce waste**

**Improve Bottom Line**

**Improve environmental foot print**







## Applications

Basic Monitoring  
Advanced Metering  
Circuit and Equipment Monitoring  
Remote Monitoring  
Power Generation Monitoring  
Environmental Monitoring





## Services

- ❖ Consultancy
- ❖ Reporting
- ❖ Installation of Utility monitoring equipment
- ❖ Energy Efficiency measures and installation
- ❖ Utility cost reductions and education
- ❖ General electrical work
- ❖ Renewable Energy Systems
- ❖ Site Service Level agreements

